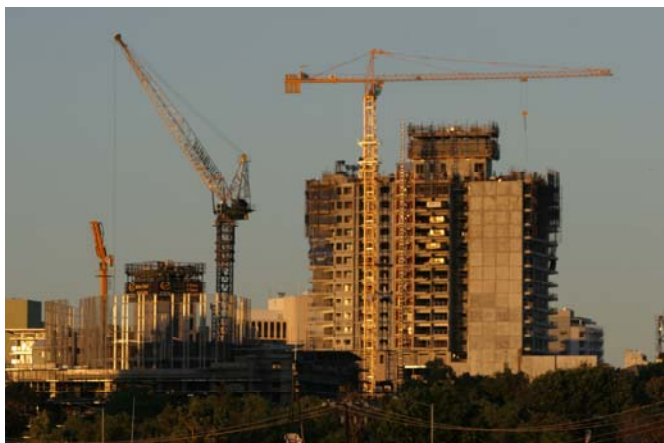


ACCESS PREDICTS CONTINUED NT GROWTH



Cranes line the Darwin skyline, pointing to strong economic growth.

ECONOMIC FORECASTER Access Economics is predicting an average growth rate of 4.5% in Gross State Product for the five years to 2011-12.

Treasurer Syd Stirling said the June quarter report card showed the Territory's economic growth would surpass the national rate of 3.7% for the five year average.

"The Territory's rate of employment growth is expected to be the highest in Australia at 2.8%, compared with the national rate of 1.6%" he said.

"On average, population growth in the Territory is expected to be 1.7%, above the national forecast of 1.3%," said the Treasurer.

Access Economics describes the Territory as "tailor-made to sell into the stronger-for-longer boom in China and the wider developing world."

New shipping line arrives in Darwin

MOCEAN SHIPPING'S *Territory Trader* ended her maiden voyage, establishing a new shipping service between Surabaya in Indonesia and Darwin.

Aimed at servicing the mining industry in both countries, the ship unloaded containers and furniture at Darwin's East Arm Wharf this week.

Over the last two years, the NT Government has been actively facilitating the idea of servicing miners through the Indonesian Mining Procurement Forum held in Darwin last year and the Global Freight Connect conferences aboard the Ghan passenger train.

MOCEAN, a partnership between Meratus Shipping from Indonesia and Ocean Shipping from Townsville, will operate the service monthly.

"Because of the Meratus connection it offers the potential to provide a service out of Darwin, back out to the big mining developments in Indonesia," said Norman Marine Services' Mark Norman, the Darwin operator of the service.

Qantas increases Territory services

QANTAS' total number of flights will rise from 139 to 153 a week, coming into effect in October.

Under the new schedule, the carrier will make the daytime return B737 service between Sydney and Darwin year round, with a minimum of three flights a week, increasing in the dry season.

It will also operate four additional return B737 flights a week to Alice Springs from the east coast during the dry, an increase of nearly 700 seats a week.

Darwin house prices pass \$400K

THE MEDIAN price of houses in the greater Darwin region is now \$421,010 according to an Australian Property Monitors report.

Darwin's median house price was measured at \$390,000 in May and the city now tops Brisbane at \$388,269, Adelaide at \$355,827 and Hobart at \$258,059.

The median price is the middle price between the least expensive and most expensive houses sold.

Housing Industry Association NT manager Graham Kemp told the *NT News* that the figure was realistic and showed the Darwin housing market was still strong.

LJ Hooker property consultant Jeremy O'Donoghue said the demand for Darwin houses was still growing.

"People think it's expensive but housing in the northern suburbs of Darwin will continue to rise despite the market showing some signs of slowing."

New skilled worker campaign launched

CHIEF MINISTER Clare Martin has announced the latest instalment of the Skilled Worker Campaign – which has generated 6000 enquiries since it started in 2005.

This campaign will see a stronger focus on information nights in regional NSW and Victoria, advertising in national magazines and newspapers, and a website.

All enquiries into the campaign will be passed to recruitment agencies who will report to government on a monthly basis to track the campaign's success.

For more information visit www.theterritory.com.au or call 1800 006 282.